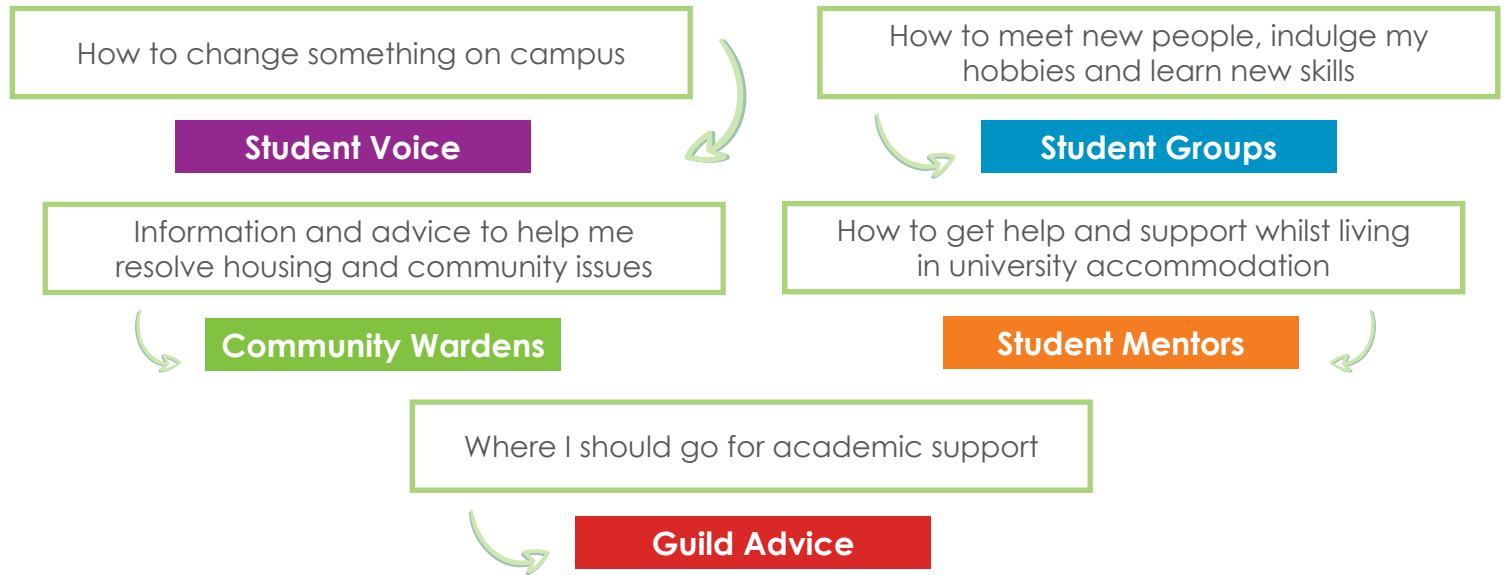
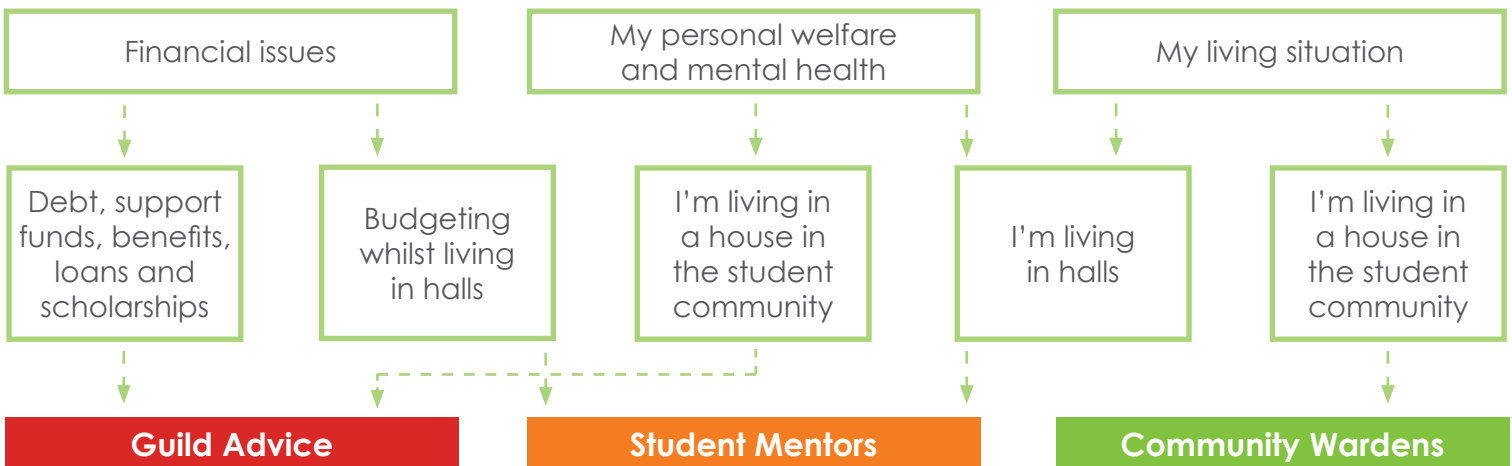


Postgrads: Be in the know, know where to go...

I WANT TO KNOW...



I WANT TO TALK TO SOMEONE ABOUT...



<p>Student Groups - Whether you like Game of Thrones, Shakespeare or Yoga, you're sure to find the perfect group for you. Or if you have an idea you can start your own.</p>	<p>studentgroups@guild.bham.ac.uk www.guildofstudents.com/studentgroups</p>
<p>Student Voice is the place for you if you're looking to make a change. This is the hub for all elections activities, and is where you can come to make course suggestions.</p>	<p>studentvoice@guild.bham.ac.uk www.guildofstudents.com/representation/how-do-you-change-things</p>
<p>Guild Advice offer advice on: your academic study, housing, welfare and education, finance and employment.</p>	<p>guildadvice@guild.bham.ac.uk www.guildofstudents.com/support/guildadvice</p>
<p>Student Mentors are fellow students who offer confidential advice and support to all living in Halls. They cover; wellbeing, accommodation, academic and financial queries.</p>	<p>mentorwelfare@guild.bham.ac.uk www.guildofstudents.com/support/studentmentors</p>
<p>Community Wardens are a team of students who help out with issues related to external housing, including; noise complaints, litter and safety.</p>	<p>community@guild.bham.ac.uk www.guildofstudents.com/support/community-wardens</p>